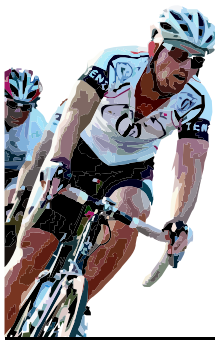


May 29th 2011

TEXAS STATE SKILL BASED CRITERIUM CHAMPIONSHIP

May 29th 2011



Presented by
G S T E N Z I N G
 and
BICYCLES Plus
www.bicyclesplustx.com

Category	Start Time	Distance	Entry Fee	Purse	Places	\$Primes	Field Limit
Men 5	8:00am	45 minutes	\$35.00	Awards	3	\$0	50
Men 4*	8:55am	55 minutes	\$35.00	\$500	5	\$200	100
Men 3*	10:10am	60 minutes	\$35.00	\$1,100	8	\$250	100
Women 1&2* / 3*	11:20am	60 minutes	\$30.00	\$1,000 / \$500	10/5	\$100 / \$100	100
Men 2*	12:30pm	75 minutes	\$35.00	\$1,500	15	\$250	100
Men P/1*	1:55pm	90 minutes	\$35.00	\$2,000	20	\$250	100
Women 4*	3:35pm	45 minutes	\$25.00	\$400	4	\$100	75
Junior Open / J10-14	4:30pm	30 minutes	\$15.00	Awards	3/3	\$0	75 total

Directions:

The course is located at 9700 Wade Blvd. in Frisco, Texas (Next to the Superdome). The course is 1.15 mile in length with closed roads. The roads are great! Please follow signs for parking and **DO NOT DRIVE ON THE COURSE.**

Online registration available at bikereg.com



online service fees apply

USAC Permit Pending



General event notes:

A heart felt thanks to the Collin County Community College District for their graciousness in allowing us to come out and play bike racer for the afternoon. Please show your appreciation by respecting the facilities. Always obey traffic directions given by people that look official.

- Juniors categories are restricted to Cat 4&5. Jrs Open and Jrs 10-14 Women and Men will race at the same time with separate prize lists.
- Women 1&2 and Women 3 race at the same time. There will be separate prize lists and primes and a State Champion for each category
- Non Texas residents are eligible for prizes and TXBRA State Cup points, but **NOT** State Championship Medals or Jerseys.

HELMETS MUST BE WORN AT ALL TIMES WHILE RIDING BICYCLES AT THIS EVENT!

Field maximum and minimum sizes per table. Promoter reserves the right to combine, cancel or reduce prizes/trophies of races that do not meet the minimum number of riders. \$10.00 discount applies to additional races!

Rules:

All USAC rules apply. Rain or shine. Free lap rule in effect. Team wheels in team wheels out. **NO LITTERING.** No warm-up on the course while races in progress (disqualification may occur). Bring rollers or trainers for warm up. Promoter reserves the right to combine or cancel classes/categories/prize lists if minimum field sizes (15) are not met. Free lap rule is in effect until 5 laps from the finish.

****Indicates the field will be racing for the State Champ Jersey.***

Registration and Fees:

Online registration at bikereg.com. \$10.00 late fee applies to onsite registration. Online registration closes at noon on May 27th

Race day registration opens at 7:00 A.M. and closes 10 minutes before race start.

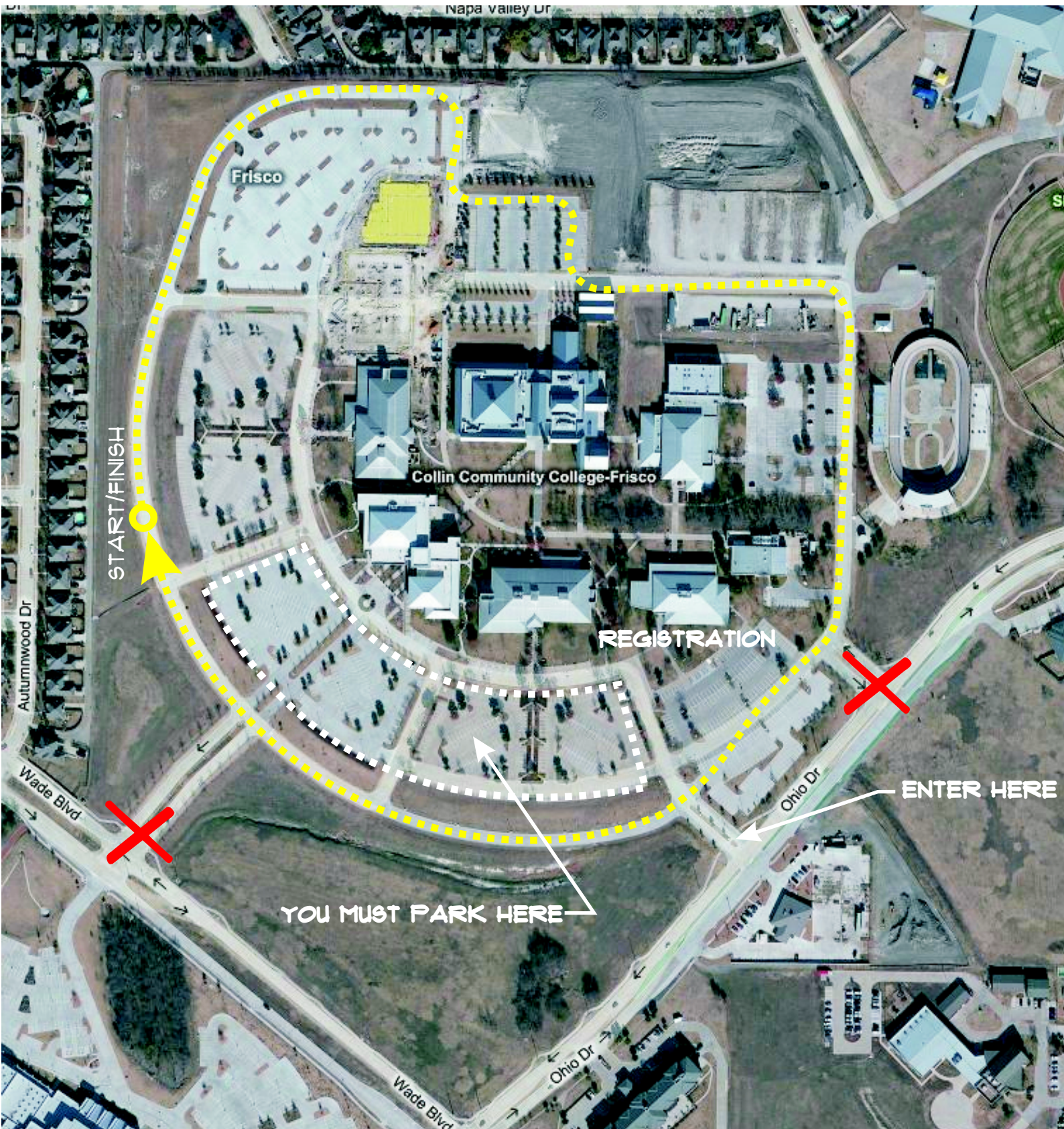
No unattached fees, Duh.

A \$10 discount will be given for each additional race.

Event Contact: Jim Byrd jim@jimbyrd.com



This event is a STATE CUP event as part of TXBRA



Napa valley Dr

Frisco

Collin Community College-Frisco

REGISTRATION

START/FINISH

ENTER HERE

YOU MUST PARK HERE

Autumnwood Dr

Wade Blvd

Ohio Dr

Wade Blvd

Ohio Dr